

## CONDENSING UNITS

### HERMETIC UNITS

Hermetic compressor, crankcase heater where foreseen,

Basement in galvanized metal sheet and air condenser in copper tube and aluminum fins with axial fan motors.

Liquid receiver with overpressure discharge device

Liquid and suction valves in standard models with thermal expansion valve.

In the water cooled version the compressor is equipped with cooling fan.

For R290 version the units are equipped with mini-channel condensers and approved components.

The units can be equipped with the following accessories:

Liquid line

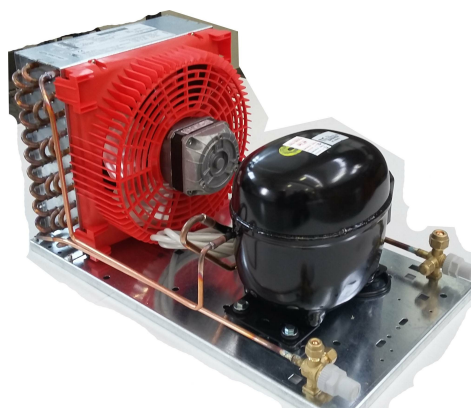
Safety and control pressure switches

Liquid and oil separators

Electric box for power and condenser fan management

EC fans

Electronic remote monitoring or management



## TN -5°C/-15°C

#### DATI TECNICI | TECHNICAL DATA | TECHNICAL DATA

C14.11

<b>Unità</b> <b>Unit</b> <b>Unit</b>	Tensione   Voltage   Voltage	volt/f/Hz	220/240-1-50HZ
	Assorbimento   Absorption   Absorption	W	396
		A	3,1
	Compressore   Compressor   Kompressor	model	AE4430YFZ
		cc	8.02
	Refrigerante   Coolant   Coolant		R134a
Tipo Espansione Expansion management Expansion management		Capillare Exp. Capillary Kapillar Expansion	
<b>Condensazione</b> <b>Condensation</b> <b>Condensation</b>	Tipo cond.   Cond. type   Cond. type		aria
<b>Dimensioni</b> <b>Sizes</b> <b>Sizes</b>	Diam. tubo liq.   Liq. line diam.   Liq. line diam.	mm	6
	Diam. tubo asp.   Suct. line diam.   Suct. line diam.	mm	10
	Larghezza   Width   Width	mm	300
	Profondità   Depth   Depth	mm	480
	Altezza   Height   Height	mm	275
	Peso   Weight   Weight	kg	17,25
<b>T</b>	Temp. Ambiente Max   Max ambient temp.   Max ambient temp.	°C	32

#### TABELLA DI SELEZIONE | SELECTION TABLE | AUSWAHLTABELLE

<b>TC -5°C</b>	W	507
<b>TC -10°C</b>	W	408
<b>TC -15°C</b>	W	321