

CONDENSING UNITS

HERMETIC UNITS

Hermetic compressor, crankcase heater where foreseen,

Basement in galvanized metal sheet and air condenser in copper tube and aluminum fins with axial fan motors.

Liquid receiver with overpressure discharge device

Liquid and suction valves in standard models with thermal expansion valve.

In the water cooled version the compressor is equipped with cooling fan.

For R290 version the units are equipped with mini-channel condensers and approved components.

The units can be equipped with the following accessories:

Liquid line

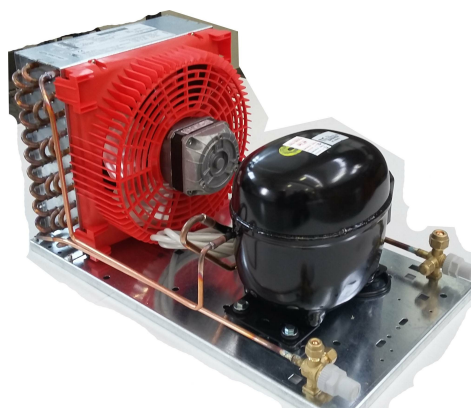
Safety and control pressure switches

Liquid and oil separators

Electric box for power and condenser fan management

EC fans

Electronic remote monitoring or management



TN -5°C/-15°C

DATI TECNICI | TECHNICAL DATA | TECHNICAL DATA

C12.3

Unità Unit Unit	Tensione Voltage Voltage	volt/f/Hz	220/240-1-50HZ
	Assorbimento Absorption Absorption	W	934
		A	6,35
	Compressore Compressor Kompressor	model	AE4460ZFZ
		cc	10,33
	Refrigerante Coolant Coolant		R452A
Tipo Espansione Expansion management Expansion management		Capillare Exp. Capillary Kapillar Expansion	
Condensazione Condensation Condensation	Tipo cond. Cond. type Cond. type		aria
Dimensioni Sizes Sizes	Diam. tubo liq. Liq. line diam. Liq. line diam.	mm	6
	Diam. tubo asp. Suct. line diam. Suct. line diam.	mm	10
	Larghezza Width Width	mm	330
	Profondità Depth Depth	mm	510
	Altezza Height Height	mm	295
	Peso Weight Weight	kg	24
T	Temp. Ambiente Max Max ambient temp. Max ambient temp.	°C	32

TABELLA DI SELEZIONE | SELECTION TABLE | AUSWAHLTABELLE

TC -5°C	W	1063
TC -10°C	W	905
TC -15°C	W	760