

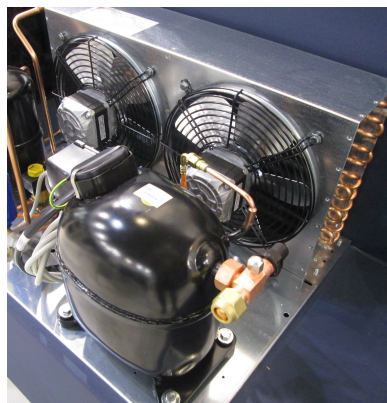
CONDENSING UNITS

HERMETIC UNITS

Hermetic compressor, crankcase heater where foreseen,
 Basement in galvanized metal sheet and air condenser in copper tube
 and aluminum fins with axial fan motors.
 Liquid receiver with overpressure discharge device
 Liquid and suction valves in standard models with thermal expansion valve.
 In the water cooled version the compressor is equipped with cooling fan.
 For R290 version the units are equipped with mini-channel condensers and approved components.

The units can be equipped with the following accessories:

- Liquid line
- Safety and control pressure switches
- Liquid and oil separators
- Electric box for power and condenser fan management
- EC fans
- Electronic remote monitoring or managment



TN -5°C/-15°C

DATI TECNICI | TECHNICAL DATA | TECHNICAL DATA

V300.3/2V

Unità Unit Unit	Tensione Voltage Voltage	volt/Hz	220/240-1-50HZ
	Assorbimento Absorption Absorption	W	5200
		A	28
	Compressore Compressor Kompressor	model	FH4540Z
		cc	74.2
	Refrigerante Coolant Coolant		R452A
Condensazione Condensation Condensation	Tipo Espansione Expansion management Expansion management		Valvola Exp. Valve Expantionsventil
	Tipo cond. Cond. type Cond. type		aria
Dimensioni Sizes Sizes	Diam. tubo liq. Liq. line diam. Liq. line diam.	mm	12
	Diam. tubo asp. Suct. line diam. Suct. line diam.	mm	22
	Larghezza Width Width	mm	940
	Profondità Depth Depth	mm	630
	Altezza Height Height	mm	460
	Peso Weight Weight	kg	83
T	Temp. Ambiente Max Max ambient temp. Max ambient temp.	°C	32

TABELLA DI SELEZIONE | SELECTION TABLE | AUSWAHLTABELLE

TC -5°C	W	6249
TC -10°C	W	5194
TC -15°C	W	4234